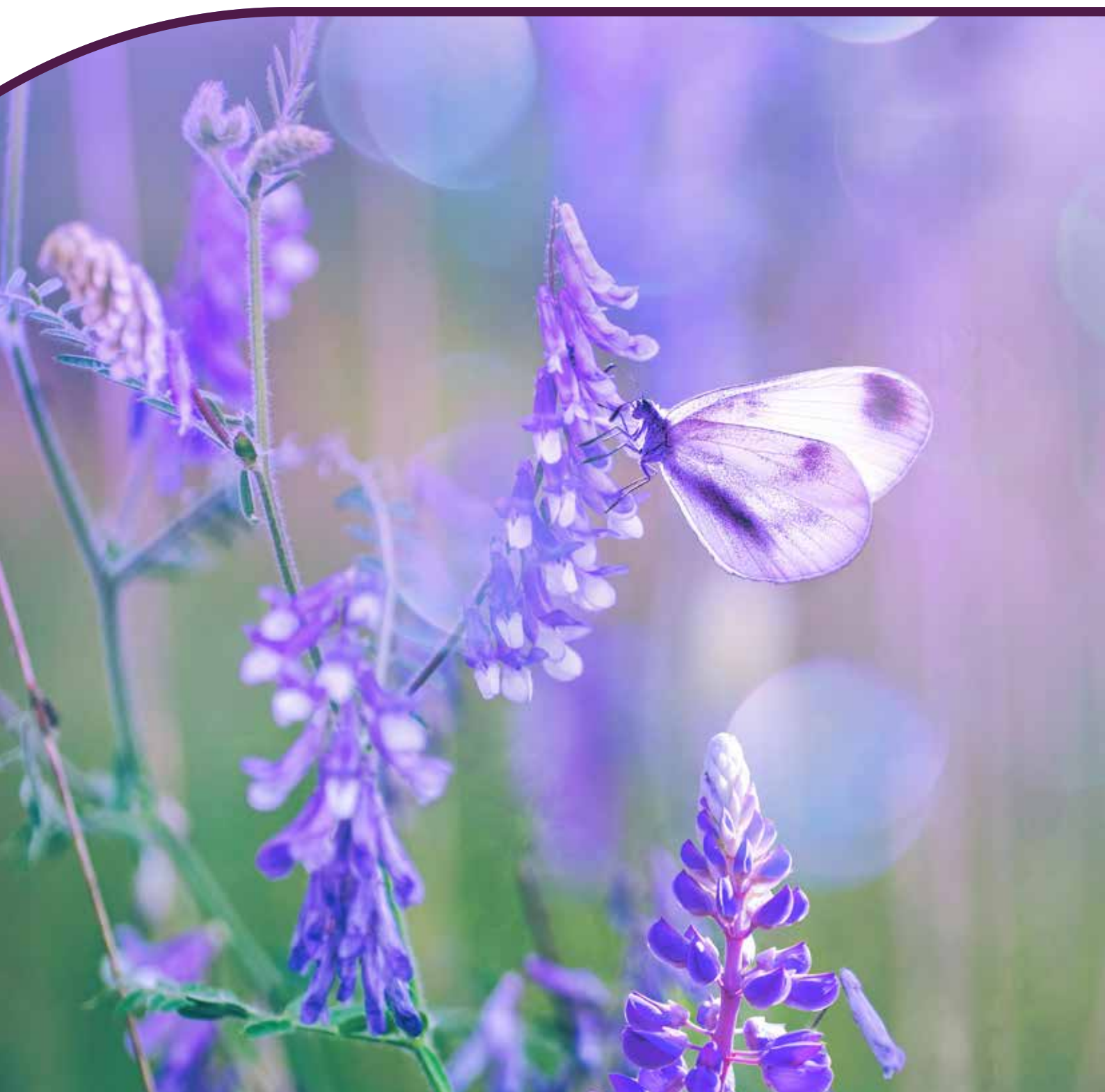


Pricing Information

December 2024



Our Funeral Services

Typically, the cost of a funeral will include the following elements:

Professional Services

This includes taking care of all necessary legal and administrative arrangements. We will meet with you and your family to discuss the funeral arrangements and will provide guidance and advice on all the practical and legal documentation required, such as how to register the death. We will organise the funeral service, committal and the after funeral reception, as required. This includes making arrangements with the crematorium, cemetery or church, and reception venues, as appropriate; liaising with your chosen minister or celebrant; and for any additional services as required. Our Funeral Director and branch team are available to provide help and guidance 24 hours a day.

Collecting and Transporting the Deceased

Our professional, trained team will collect the deceased from the place of death or other location and will bring them into our care in a private ambulance or other suitable vehicle, with dignity and respect. Additional charges may apply for bringing the deceased into our care outside of normal working hours or for distances of more than 15 miles from our premises.

Care of the Deceased

We will tend to the care and preparation of the deceased before the funeral in appropriate, high standard, professional facilities. We will also dress your loved one in their own clothes or in a suitable gown, which we will supply if applicable.

Viewing the Deceased

Use of our Chapel of Rest, or private rest room by appointment, for family and friends to spend time with the deceased, as required.

Ceremonial Hearse and Staff

On the day of the funeral, provision of a modern motor hearse (or other appropriate vehicle, if applicable) to convey the deceased to the crematorium or cemetery. We will also provide a Funeral Director and staff, including up to four pall bearers, dressed in the appropriate livery, to conduct the funeral.

Or

Ceremonial Hearse, Staff and Limousine

In addition to the above, we will also provide a chauffeured limousine for up to six passengers.

Coffin

We have a wide selection of veneered and solid wood coffins in a range of finishes, coffins made from other natural materials, personalised picture coffins and American-style caskets to choose from.

Additional Funeral Director Products and Services

This includes embalming, additional limousines, specialist hearses, reception of the coffin into church or home, urns, ashes caskets, keepsakes, jewellery, flowers, orders of service booklets etc.

Disbursements and Third-Party Fees

Disbursements are payments made to third parties on your behalf. These may include crematorium or cemetery fees, minister or celebrant fees, doctor's fees for cremation etc.

Our experienced team are here to listen, to guide you through the arrangement and help you make the right choices for your loved one.

Payment Information

Payment of Funeral Account

We respectfully request that a deposit is paid to us prior to the funeral. You may, should you wish, choose to pay the full funeral account in advance. The deposit we require is 50% of the total Funeral Director's Charges plus 100% of the costs for Disbursements (third party fees) and 100% of Other Products & Services you have chosen (This payment is also required for those claiming assistance from Governmental schemes). Should you choose the Unattended Funeral Package, we require full payment of the entire funeral account in advance.

Please Note: Payment is due within 21 days of the date of invoice. If the account remains unpaid after this date, we reserve the right to charge a fee in order to cover our administration costs for the recovery of any debt. Interest may also be charged to your account on any remaining balance.

Please be aware there is no need to wait for probate/confirmation. If sufficient funds are available, settlement can usually be made directly from the deceased person's bank account without having to wait for probate/confirmation to be completed. Please inform us if you intend to claim assistance for funeral expenses from Governmental schemes (e.g. DWP). These assistance payments are normally a contribution towards costs and may not cover the entire cost of the funeral so there will be a balance to be paid by you. The rules for eligibility are complex and we suggest that you speak with your Funeral Arranger for advice and guidance. In the event of an unsuccessful claim, payment of the full amount of the funeral account will be your responsibility.

We accept payment by most major Debit or Credit Cards*, Online Bank Transfer, BACS, Cash or Cheque. Please ask your funeral arranger for details.

*excluding American Express and Diners Club International.



Funeral Prices

Funeral Directors Services - Bespoke

Professional Services	£685
Collecting and Transporting the Deceased	£300
Care of the Deceased	£400
Embalming	£175
Ceremonial Hearse, Staff and Limousine	£995
Total	£2,555

Please Note: If a limousine is not required there will be a reduction of £200 from the above. If embalming is not required the fee of £175 will not be charged.

plus your choice of Coffin or Casket

from £445

Horse-Drawn Package *

£4,815

Includes: Professional Services, Collecting and Transporting the Deceased, Care of the Deceased, Viewing of the Deceased, Embalming, Horse-Drawn Hearse with a pair of black horses, Ceremonial Motor Hearse (to transport flowers), Staff and two Limousines, and a Westminster Solid Wood Coffin (Oak or Mahogany). **Savings compared to Bespoke Funeral - more than £150.**

Wicker Coffin Package *

£3,550

Includes: Professional Services, Collecting and Transporting the Deceased, Care of the Deceased, Viewing of the Deceased, Embalming, Ceremonial Hearse, Staff and Limousine, and a Personalised English Willow (Wicker) Coffin.

Savings compared to Bespoke Funeral £125

Solid Wood Package *

£3,325

Includes: Professional Services, Collecting and Transporting the Deceased, Care of the Deceased, Viewing of the Deceased, Embalming, Ceremonial Hearse, Staff and Limousine, and a Surrey Solid Wood Coffin (Oak or Mahogany).

Savings compared to Bespoke Funeral £75

Traditional Package *

£3,100

Includes: Professional Services, Collecting and Transporting the Deceased, Care of the Deceased, Viewing of the Deceased, Embalming, Ceremonial Hearse, Staff and Limousine, Worcester Wood Veneer Coffin (Oak or Mahogany).

Savings compared to Bespoke Funeral £50

Attended Funeral Package

£2,645

Includes: Professional Services (£685), Collecting and Transporting the Deceased (£300), Care of the Deceased (£400), Viewing of the Deceased (£20), Ceremonial Hearse and Staff (£795) and Simple Foil Veneer Coffin** (£445).

Restrictions: Service and committal at same venue. Additional services and/or products may be added at the standard charge.

Simple Funeral Package

£2,450

Includes: Professional Services. Collecting and Transporting the Deceased during normal office hours, Care of the Deceased, Viewing of the Deceased, Ceremonial Hearse and Staff and a Simple Foil Veneer Coffin**. *Restrictions: No choice of the day, date and time of the funeral and the service and committal must be the same venue. Coffin type cannot be changed or upgraded. Limousines and/or specialist vehicles (e.g. Horse-Drawn Hearse) cannot be added.*

Unattended Funeral (Direct Cremation/Burial)

£1,700

Includes: Limited Professional Services, Collecting and Transporting the Deceased during normal office hours, Care of the Deceased, Viewing of the Deceased, Non-Ceremonial Vehicle and Staff to transport the deceased to the crematorium or cemetery, and Simple Foil Veneer Coffin**. *Restrictions: No choice of the day or date of the cremation/burial and attendance of mourners at the Crematorium/Cemetery is not permitted. Certain additional products and/or services may be added at the standard charge. Additional charges may apply.*

** Simple Foil Veneer Coffin

(included in the Attended Funeral Package, Simple Funeral Package and Unattended Funeral Package)

** Please note there is no reduction to the package price for services included but which are either not required or not used.*

All prices shown exclude Disbursements and Third-Party Fees paid on your behalf.



Coffins & Caskets



York – Oak Effect Foil Veneer
£445



Worcester – Oak Veneer
(also available in Mahogany)
£595



Windsor – Semi-Solid Mahogany
(also available in Oak)
£720



Surrey – Solid Oak
(also available in Mahogany)
£845



Reflections – Personalised Picture Coffins
Choose from a ready-made design or design your own
£920



Personalised English Willow (Wicker)
Hand-woven in Somerset, personalised
to your specification
£1,120



Rochester – Oak Veneer
£520



Oxford White – White Painted Veneer
(also available in a range of colours - £720)
£670



Premium Bamboo*
£720



Westminster – Solid Oak
(also available in Mahogany)
£865



Banana Leaf – Coffin shape*
(also available in Casket shape*)
£995



American-Style Caskets*
American-style Caskets are available in wood or
metal in a wide selection of designs **From £1,470**



Unattended (Direct) Cremation Pricing Information

What is an Unattended (Direct) Cremation

An unattended cremation, also known as Direct Cremation Or Unattended Funeral, is an alternative to a traditional funeral, where there is no formal service and there are no family or mourners present for the cremation.

Why choose an Unattended (Direct) Cremation?

Our Unattended (Direct) cremation provides an affordable alternative to a full-service funeral, without compromising in any way at all on the care given to the deceased person. This service offers an option for those families who are either seeking simplicity, or who wish to work to a limited budget and provides the family the same level of empathy, care, and personal service as our full-service funeral arrangements.

When you organise an unattended cremation with us, we offer you the opportunity to spend time with the deceased in our private chapel of rest/rest room prior to the day of the cremation, should you wish.

Should you wish to celebrate the life of the deceased at a separate venue and time, without the formalities of a church or crematorium service, we may be able to assist you in organising a venue, celebrant, catering and flowers, for a 'Celebration of Life' - details below.

Our dedicated and empathetic funeral arrangers will look after you and your family throughout the direct cremation arrangements.

✓ Included in our Unattended (Direct) Cremation

- Our Professional Services and making sure the necessary paperwork is completed
- Collecting and transporting the deceased
- Caring for the deceased until the day of the cremation
- Providing a private chapel of rest/rest room for you to spend time with the deceased should you wish
- A 'non-ceremonial' vehicle, and staff, to convey the deceased to the crematorium
- Simple wood effect veneer coffin
- Your choice of return of the ashes to you, or scattered at the crematorium Garden of Remembrance

✗ Not included in our Unattended (Direct) Cremation

- You cannot choose the day, date or time of the cremation
- Family or Mourners are not permitted to attend the crematorium
- A funeral service cannot be held
- Coffin upgrade not available
- No celebrant/clergy may be present



Unattended (Direct) Cremation - £1,700

Includes: Limited Professional Services, Collecting and Transporting of the Deceased, Care of the Deceased, Viewing of the Deceased, Non-Ceremonial Vehicle and Staff to transport the deceased to the crematorium or cemetery, and Simple Foil Veneer Coffin**.

Restrictions: No choice of the day or date of the cremation/burial and attendance of mourners at the Crematorium/Cemetery is not permitted. Certain additional products and/or services may be chosen and charged at the rate shown on full price list.

Additional charges may apply. Price shown exclude Disbursements and Third-Party Fees paid on your behalf.



Unattended Crematorium Fee - £295

The crematorium fee is charged in addition to the options chosen above.

We have an agreement with selected crematoria across the UK, under which we will make all necessary arrangements with them, and return the ashes to you after the cremation, or arrange for the ashes to be scattered at the crematorium Garden of Remembrance.

If you wish, you may specify a particular crematorium location. In that case, the fee for your chosen crematorium will be charged instead of the fee for our chosen crematorium.

Please note some crematoria allow a small number of family to attend a very brief ceremony at specific times. If this option is chosen their appropriate fee will be charged, and because there will be family in attendance, the 'Simple Funeral Package' will be charged.

Cortège Package (optional extra) - £495

For families who prefer the simplicity of an Unattended funeral, but wish for the deceased to be conveyed to the crematorium in a traditional ceremonial vehicle.

- Provision of ceremonial hearse & two members of staff
- Small spray of flowers placed on the coffin.

NB All other restrictions above apply.



Simple Funeral Package - £2,450

For families who prefer the simplicity of an Unattended funeral, but wish to be present at the crematorium/cemetery.

Includes: Professional Services. Collecting and Transporting the Deceased during normal office hours, Care of the Deceased, Viewing of the Deceased, Ceremonial Hearse and Staff and a Simple Foil Veneer Coffin**.

The Simple Funeral Package is an upgrade on an Unattended (Direct) Cremation and is priced at an additional £750 over the Unattended (Direct) Cremation charge.

Restrictions: No choice of the day, date and time of the funeral and the service and committal must be the same venue. Coffin type cannot be changed or upgraded. Limousines and/or specialist vehicles (e.g. Horse-Drawn Hearse) cannot be added.

Price shown exclude Disbursements and Third-Party Fees paid on your behalf

Please note that if the Simple Funeral package is chosen, the crematorium fee is likely to be considerably higher than the £295 shown above. We will be able to advise you of the precise options and fees at your chosen crematorium.

Celebration of Life Package (optional extra) - £295 plus any third party fees

Should you wish to celebrate the life of the deceased at a separate venue and time, without the formalities of a church or crematorium service, we may be able to assist you in organising a venue, celebrant, catering, and flowers, for a 'Celebration of Life' service.

Our dedicated and empathetic funeral arrangers will help you make the necessary arrangements and can provide transport at our usual charges, should you wish.

** Simple Foil Veneer Coffin

(included in the Simple Funeral Package and Unattended (Direct) Funeral Package)



Additional Services

Additional Funeral Director's Services

Embalming	£175
Additional Limousine(s) – each	£295
Floral Motor Hearse (Motor Hearse to transport flowers)	£325
Motorcycle Hearse	POA
Vintage Lorry or Other Specialist Motor Vehicles (of different colour, make, model)	POA
Horse-Drawn Hearse <i>(note: in addition to the motor hearse to transport flowers and for safety reasons)</i>	POA
Bringing the Deceased into our Care (outside office hours)	£125
Surcharge for Care of Deceased over 30 days (per day)	£10
Surcharge for Holding Ashes for more than 90 days (per month)	£40
Reception of Coffin into Church/Home (during office hours)	£185
Reception of Coffin into Church/Home (outside office hours)	£300
Use of the Funeral Home's Service Chapel for the Funeral Service (where available)	£175
Additional Time on Funerals – cost per half hour per vehicle (for funerals over 3 hours)	£60
Additional Mileage for Funeral Vehicles (per mile over 20 miles - one way)	£2
Additional Mileage for Bringing the Deceased into our Care (per mile over 15 miles one way)	£2
Saturday Funeral (additional charge – excl. third-party fees)	£250
Sunday or Bank Holiday Funeral (additional charge – excl. third-party fees)	£500
Additional Pall Bearers (additional charge per 2 bearers)	£80
Dove Release – Single Dove	£175
Dove Release – Each additional Dove	£25
Collection and Delivery of Ashes (Local area within 15 miles)	£25
Collection and Delivery of Ashes (Over 15 miles and/or out of area)	POA
Funeral Director to attend burial of ashes, after a funeral	£165

The below additional charges apply to the Attended Funeral Package if applicable:

Viewing of the Deceased at the Funeral Home - by appointment	£20
Funeral Service at a Different Venue to the Committal Service at the Crematorium/Cemetery	£185

Disbursements (Third-Party Fees)

Disbursements are payments made to third parties on your behalf. (These include, crematorium or cemetery fees, celebrant or minister fees, etc.) We will provide you with a quote for these costs on our Estimate of Funeral Charges/Contract for Services



Other Products & Services



Specialist Hearse

If you would like something different or unique such as a Horse-Drawn Hearse, Land Rover Hearse, Motorcycle Hearse, or another type of vehicle for your loved ones final journey, we can assist you in arranging this.



choice
from Funeral Partners

Choice Funeral Plans

Our Funeral Plans could provide peace of mind for you and your family. They are easy to arrange, enable you to specify wishes, fix the costs of Funeral Director Services, which could change in the future.



Flowers

Floral tributes can be very personal. Whether it's a special arrangement or favourite flowers and colours, we can arrange personal and beautiful floral tributes and arrangements that reflect the passions of your loved one.



Ashes Caskets, Urns, Keepsakes & Jewellery

We offer a wide range of high-quality ashes caskets, scatter tubes and urns as well as personal keepsakes and jewellery for you to treasure.



Orders of Service

We can arrange for a high-quality and bespoke Order of Service to be designed and printed, using photographs, wording or poems to create a unique keepsake. We also have a full range of funeral stationery and 'In Memory' pins.



Online Funeral Notice, Tribute & Donations Service

We can set up a free online donations & tribute page to share with friends and family, to communicate the funeral details, share memories, stories and photos and collect donations for charities.



Bereavement & Probate

We are proud to work in association with the National Bereavement Service, who offer practical and emotional support, legal guidance, help with probate and also offer advice to anyone planning ahead with a free will/estate planning review.

This service is free of charge. For any guidance, please call freephone **0808 164 2239** or visit **www.thenbs.org**



**FUNERAL
SAFE**

Spread the cost in
monthly instalments
with funeral finance

**0%
INTEREST
FOR 3 MONTHS***

Funeral Finance

Funeral Safe Ltd are authorised and regulated by the Financial Conduct Authority. They provide finance and allow you to spread funeral costs in monthly instalments. They will do a credit assessment of your circumstances when you apply, which will determine the rate they can offer you. The credit available is subject to status.

*Subject to credit assessment

Memorial Masonry

Whether you have chosen burial or cremation, a memorial is a lasting tribute and offers a special place to reflect on memories. We can help you create the perfect memorial for your loved one, with a large selection of styles to choose from. We are also able to arrange additional works on existing memorials and as part of our service, we will assist you with the completion and submission of the appropriate documentation.

We are offering 10%* off memorial masonry, additional works, cremation tablets, plaques and vases when an order is placed within three months of the funeral taking place.

For further assistance, call us or call our specialist memorial department on 0808 189 2654

New Memorials • Vases • Cremation Tablets • Plaques • Renovations • Repairs • Inscriptions

*The 10% discount applies to the price of the memorial masonry, additional works, cremation tablets, plaques and vases, inclusive of VAT, when an order is placed at the time of arrangement or within three months of the funeral taking place. Discount does not apply to any remove and refix costs, permit fees or other associated charges as applicable.



Coffins & Caskets Price List

HEARTWOOD - Traditional Wooden Coffins

Solid Wooden Coffins	
Westminster - Solid Oak	£865
Westminster - Solid Mahogany	£865
Surrey - Solid Oak	£845
Surrey - Solid Mahogany	£845
Selby - Solid Oak	£770
Selby - Solid Sapele	£770
Windsor - Classic Oak	£720
Windsor - Classic Mahogany	£720
Veneer Wooden Coffins	
Worcester - Oak Veneer	£595
Worcester - Mahogany Veneer	£595
Rochester - Oak Veneer	£520
York - Oak Effect Foil Veneer	£445
Painted Wooden Coffins	
Oxford - White	£670
Oxford - Contemporary Coloured Coffins	£720
English Wooden Caskets	
Buckingham - Solid Mahogany	£1,970
Canterbury - Solid Oak	£1,920
Temporary Wooden Crosses and Grave Markers	
Large Grave Cross - Oak or Mahogany (4' 6")	£110
Small Grave Cross - Oak or Mahogany (3' 6")	£80
Temporary Grave Marker - Oak or Mahogany	£90
Small Grave Marker - Oak or Mahogany	£70
European Wooden Coffins	
Royal - Solid White Walnut *	£2,670
Equinox - Solid Ebiara Hardwood *	£2,170
Imperial - Solid Larch Hardwood *	£1,470
Requiem Religious Wooden Coffins	
Vatican "Last Supper" - Solid Wood *	£1,470
Turin "Last Supper" - Oak Veneer	£820
Trinity Head of Mary - Solid Oak *	£1,820
Trinity Head of Christ - Solid Oak *	£1,820

COUNTRY RANGE - Coffins & Caskets

English Willow - Personalised Wicker Coffins	£1,120
Daisy Premium Woven Coffins	
Banana Leaf - Coffin Shape *	£995
Banana Leaf - Casket Shape *	£995
Water Hyacinth - Coffin *	£945
Water Hyacinth - Half Round Square Casket *	£945
Premium Wicker Coffin - Golden or Grey *	£920
Premium Bamboo Coffin *	£720
Natural Legacy Woollen Coffins	
Swaledale Coffin - Natural or Limestone *	£970
Oasis Coffins	
Natural Seagrass Coffin *	£870
Traditional Woodland Coffins	
Brighton - Solid Pine	£820
Woodland Whitby - Oak-style Veneer	£670
Cardboard Coffin *	£570
Woodland Memorial Pack	£80

REFLECTIONS - Personalised Picture Coffins

Reflections Coffin	£920
Pathway Coffin	£1,070
Printed Interiors (additional charge)	£200
Reflections Casket	£920

GUARDIAN - American-Style Caskets

American-Style Wood Caskets	
Senate - Solid Mahogany *	£4,270
Viscount - Solid Mahogany *	£4,170
Sandringham - Solid Cherry Wood *	£3,770
Winston - Cherry Wood Veneer *	£3,070
Belgrave - Burl Wood Veneer *	£2,970
Ambassador Cherry - Solid Cherry Wood *	£2,920
Tribute Hardwood - Solid Hardwood *	£2,670
Essence - Solid Alder Wood *	£2,570
Harvest Oak - Solid Oak *	£2,470
Passion of Christ (Wood) - Solid Paulownia *	£2,370
Heritage - Solid Paulownia *	£2,270
Heritage Plus - Solid Paulownia *	£2,470
Madison - Solid Paulownia *	£2,170
Proventus Paulownia - Solid Paulownia *	£2,120
Stewart - Solid Paulownia *	£2,070
Eurocraft - Solid Paulownia *	£2,020
Virginia - Solid Paulownia *	£1,970
Wellington - Solid Paulownia *	£1,870
American-Style Metal Caskets	
Classic Copper - Solid Copper *	£5,670
Paragon Gold - Solid Bronze *	£5,470
Blue Rise - Stainless Steel *	£2,970
Passion of Christ (Metal) - 18 gauge Steel *	£2,570
Coral Jewel - 18 gauge Steel *	£2,370
Indigo - 18 gauge Steel *	£2,270
Churchill - 18 gauge Steel *	£2,170
Stella Quartz - 18 gauge Steel *	£2,070
Devotion - 18 gauge Steel *	£1,970
Nightfall Silver - 18 gauge Steel *	£1,920
Sunstone - 18 gauge Steel *	£1,870
Topaz - 18 gauge Steel *	£1,820
Dynasty - 18 gauge Steel *	£1,770
Eternal Rose - 18 gauge Steel *	£1,720
Mercedes - 18 gauge Steel *	£1,670
Apollo Silver - 18 gauge Steel *	£1,570
Apollo White - 18 gauge Steel *	£1,570
Neptune Orchid - 20 gauge Steel *	£1,470
Neptune Blue - 20 gauge Steel *	£1,470
Neptune White - 20 gauge Steel *	£1,470
Neptune Silver - 20 gauge Steel *	£1,470

*Limited sizes available

